



Pinner Area Parking Review

PUBLIC CONSULTATION

IMPORTANT – THIS AFFECTS YOU – PLEASE RESPOND

Pinner Area Parking Review

What this is about?

This is an informal public consultation document aimed at gathering information from residents and businesses about parking problems on their roads, and what parking measures will work for you.

This consultation is the second stage of a three stage consultation process. A stakeholder meeting which was the first stage of the process was held on the 6th June 2013 to determine the area that will be consulted.

It is now imperative that you respond to this leaflet with your views so that officers are able to clearly identify where problems exist and what measures you would support. Your response will determine the areas that will be subject to further investigations in order to develop parking controls. The proposed parking controls will be progressed to the third stage of the consultation process which is Statutory Consultation. Parking controls will only be implemented where there is majority support.

We have extended the public consultation period to 31 days instead of the usual 21 days to allow families that may be away for part of the school holidays to have sufficient time to respond to the consultation. This means that the public consultation will run from 31st July to 30th August 2013.

It is important to note that once this Pinner Controlled Parking Zone (CPZ) review is completed it is very unlikely that there will be another review for the next 10 years. This is mainly due to a reduction in future funding and pressing requests to review other areas of the borough.

It is therefore important that you let us know of any parking issues so we can try and address them within this review.

Introduction

The Pinner CPZ also known as 'Zone A' which operates Mon – Fri 11am – 12pm was the first CPZ introduced in the borough approximately 20 years ago. The last review of this area was in 2004. The Council has since continued to receive complaints about various parking issues faced by business, residents, refuse and emergency services within the CPZ and its surrounding areas.

In 2012, changes were made to a small section of parking arrangements around Church Lane, High Street and Pinner Green. Funded from the Neighbourhood Investment Scheme, the Council was only able to make minor changes to residential parking and double yellow lines due to the funding restrictions. Not able to address all the local concerns at the time, the Council through the Traffic and Road Safety Advisory Panel (TARSAP) has agreed to conduct a full review of the Pinner CPZ this financial year (2013/14). Details of the minutes and reports from this meeting can be viewed on the following link: <http://tinyurl.com/peccqup>

The review process of the Pinner CPZ is being progressed using the following Council agreed project stages; Stakeholders Meeting, Public Consultation, Statutory Consultation and Implementation.

Stakeholders Meeting (1st Stage)

On the 6th June 2013, a Stakeholder Meeting was held with key people from the local area (residents, resident associations, businesses, Councillors, Police etc) that have knowledge and previously shown interest in the subject matter. The meeting which discussed parking problems within Pinner also agreed on the area to be included as part of this Public Consultation. The following are some of the issues that were of concern to stakeholders at the meeting:

1. A review of waiting and loading restrictions on narrow roads, bends and junctions in Pinner to ease congestion with emphasis made to the High Street.
2. The provision of loading bays, business bays and Pay & Display bays on the High Street to encourage an efficient use of parking spaces.

3. The review of the existing CPZ boundary and hours of restrictions.

Details of the meeting minutes can be viewed on the following link: <http://tinyurl.com/o4epjm4>

Public Consultation (2nd Stage)

This is the stage we are now and want to know if you have any parking problems on your street and if so, do you want parking controls developed for your road.

The consultation boundary that was proposed at the stakeholders meeting covers the existing 'Zone A' CPZ and neighbouring roads (refer to consultation map on page 4-5). However, we would like to hear from you if there are any additional roads you would like included or removed from the proposed consultation boundary and future CPZ plans. We also want to know if the existing hours of restrictions on your road are working for you.

The parking controls which are tailored to the needs of each road may either take the form of a CPZ which will include yellow lines and various types of parking bays (e.g. Permit bays), or just double yellow lines in areas that are not included in the CPZ (refer to page 6, Example of CPZ bays and yellow line markings).

We will automatically aim to include waiting restrictions (double yellow lines) where safety and access is an issue in order to adhere to the well established rules of the Highway Code. Proposed parking controls developed for roads that show interest will be re-consulted at the Statutory Consultation stage. This will give the public the opportunity to either object or support the advertised proposals.

For more information on the parking controls, the benefits and limitations, along with a number of frequently asked questions you can refer to the enclosed booklet 'Parking – Can We Help You'.

Parking permit charges

The existing CPZ restricts commuter parking by regulating the kerbside space for residents and their visitors to find parking on their road. To avoid receiving a parking fine, the vehicle owner must display a recognised permit during the CPZ hours of restriction if they park on the road. Permits can only be purchased by residents living in the CPZ unless your property is restricted in doing so. Parking permit charges are the same across the borough irrespective of the hours of control on your street.

It is important to note that if you do not wish to purchase a parking permit you are not required to do so, however you will not be able to park in the permit bays during the control times

Central government requires controlled parking schemes to be self-financing, so money raised from parking pays for the installation of CPZ, parking attendants, the costs of processing parking fines, maintenance and other associated costs.

The current annual resident parking permit costs in Harrow are:

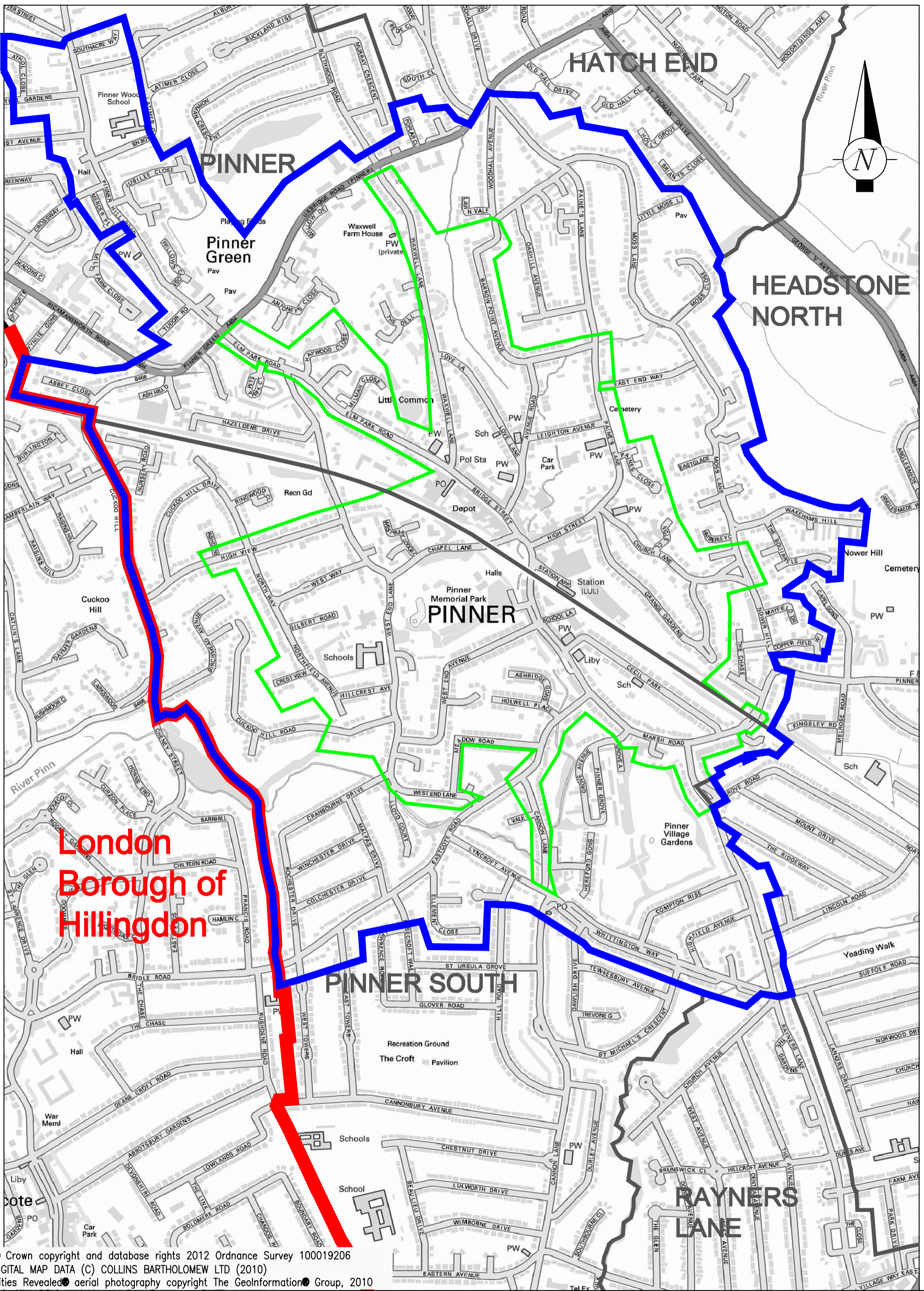
1st Vehicle in household	£62.40	2nd Vehicle	£93.60
3rd Vehicle	£124.80	4th and subsequent Vehicle	£156.00

Motorcycles - do not need a permit and can also park free-of-charge in any pay and display bay or permit bay in Harrow.

Visitor permits - £15.60 per book of 10, which is reduced to £7.80 for senior citizens or those receiving mobility benefits if the discount is claimed.

Business permits - £300 per annum

There is no charge for environmentally friendly vehicles but a permit is still required



London
Borough of
Hillingdon

© Crown copyright and database rights 2012 Ordnance Survey 100019206
 DIGITAL MAP DATA (C) COLLINS BARTHOLOMEW LTD (2010)
 Cities Revealed aerial photography copyright The GeoInformation Group, 2010

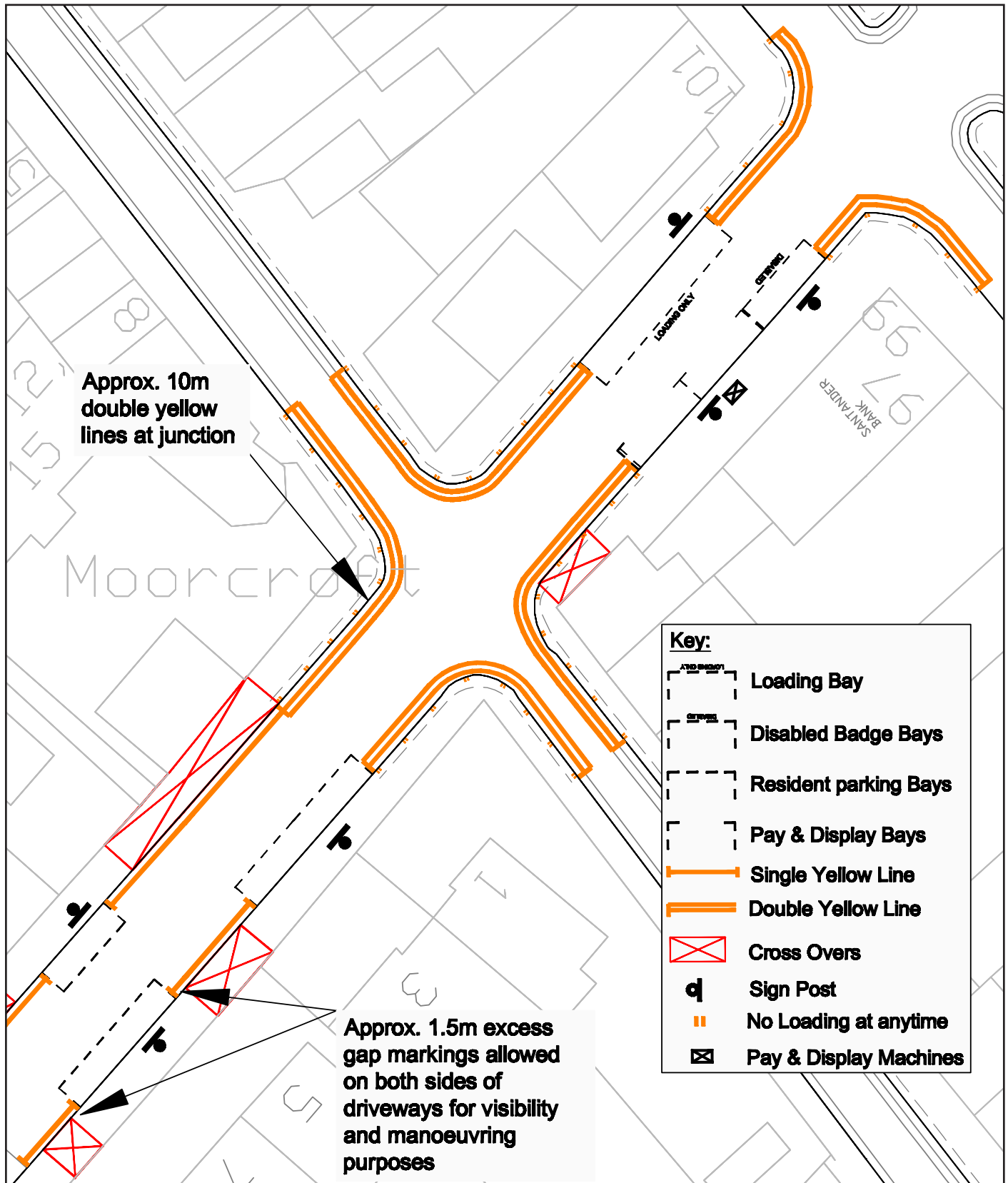
KEY:

- █ Existing Pinner CPZ Boundary
- █ Boundary between London Borough of Harrow and the London Borough of Hillingdon
- █ Ward Boundary
- █ Consultation Boundary



Pinner Area Parking Review

Example of CPZ bays and yellow line markings



Can I discuss my views with officers in more detail?

Yes. Officers will be available to discuss your concerns or suggestions in more detail during this consultation period through a series of public exhibitions.

Dates of Public exhibitions:

Monday 5th August 2013 between 11:30am – 4:30pm

Friday 16th August 2013 between 3:30pm – 6:30pm

Saturday 17th August 2013 between 11:30am – 3:30pm

Venue:

Pinner Village Hall, Chapel Lane, Pinner, Middlesex, HA5 1AA.

Officers will also be available during normal office hours. If you wish to ask them about the scheme you can contact the project engineer Willy Hauptmannl on 020 8424 1535.

What happens next?

We are aware that not everyone is of the same view and therefore have enclosed a questionnaire for you to complete in private. The information you provide will be analysed along with all other comments received.

In an effort for the Council to be more environmentally friendly and cost effective, you can submit your questionnaire on-line by visiting http://harrow-consult.limehouse.co.uk/portal/traffic_and_parking and then click on 'start survey'. This will direct you to a page containing the 'Pinner Area Parking Review' survey. You may be asked to register your details before completing the survey. Alternatively, you can send the questionnaire using the enclosed prepaid envelope. **Responses should be received no later than Friday 30th August 2013.**

As mentioned above we will analyse all the responses we receive, based on your completed questionnaires, and we will develop proposals in line with local views wherever possible.

Therefore your views are important to us

Based on this consultation officers will present a report to the Traffic and Road Safety Advisory Panel (TARSAP) on 8th October 2013. The panel will review the report and submit their recommendations to the Portfolio Holder who will determine which measures are progressed to the Statutory Consultation Stage.

The statutory consultation is the formal process necessary to implement parking measures (P&D parking bays, disabled bays, loading and waiting restrictions) and provides the opportunity for members of the public to make a formal objection to the draft traffic order. If you wish to make a representation at TARSAP further details on how to do that can be found by clicking on the shortcuts provided on the right hand side of the page when you visit

http://www.harrow.gov.uk/info/200024/consultations_and_open_forums .

We will contact all residents and businesses consulted to notify them of the results once a decision has been made by the Portfolio Holder following TARSAP.

More information

We have provided links to web pages to view certain information, as this is an economical and effective way of providing information to you at a time that suits you. If you do not have internet access and are unable to get to a public library to use the computers there, then please contact the project engineer, whose contact details are as below:

Mr. Willy Hauptmannl
Parking and Sustainable Transport
Harrow Council,
P.O. Box 39, Civic Centre,
Harrow HA1 2XA
Email: transportation@harrow.gov.uk
Tel: 020 8424 1535

Please call the number below for a large print version of this document, or a summary of this document in your language.

- Albanian** Nëqoftëse gjuha Angleze nuk është gjuha juaj e parë, dhe keni nevojë për përkthimin e informatave të përmbajtura në këtë dokumentë, ju lutemi kontaktoni numërin dhënë.
- Arabic** إذا كانت الانجليزية ليست لغتك الأولى وتحتاج لترجمة معلومات هذه الوثيقة، الرجاء الاتصال على رقم
- Bengali** যদি ইংরেজি আপনার মাতৃভাষা না হয় এবং আপনি যদি এই প্রচারপত্রের তথ্যগুলোর অনুবাদ পেতে চান তাহলে যে টেলিফোন নম্বর দেওয়া আছে সেখানে দয়া করে যোগাযোগ করুন।
- Chinese** 如果你主要說用的語言不是英語而需要將這份文件的內容翻譯成中文，請打註明的電話號碼提出這個要求。
- Farsi** اگر انگلیسی زبان اول شما نیست و شما نیاز به ترجمه اطلاعات موجود در این مدرک را دارید، لطفاً با شماره داده شده تماس بگیرید
- Gujarati** જો ઈંગ્લિશ તમારી પ્રથમ ભાષા ન હોય અને આ દસ્તાવેજમાં રહેલ માહિતીનો તરજૂમો (ટ્રાન્સલેશન) તમને જોઈતો હોય તો કૃપા કરી જણાવેલ નંબર ઉપર ફોન કરો
- Hindi** यदि आपको अंग्रेजी समझ नहीं आती और आपको इस दस्तावेज़ में दी गई जानकारी का अनुवाद हिन्दी में चाहिए तो कृपया दिए गए नंबर पर फोन करें।
- Panjabi** ਜੇ ਤੁਹਾਨੂੰ ਅੰਗਰੇਜ਼ੀ ਸਮਝ ਨਹੀਂ ਆਉਂਦੀ ਤੇ ਤੁਹਾਨੂੰ ਇਸ ਦਸਤਾਵੇਜ਼ ਵਿਚ ਦਿੱਤੀ ਗਈ ਜਾਣਕਾਰੀ ਦਾ ਤਰਜਮਾ ਪੰਜਾਬੀ ਵਿਚ ਚਾਹੀਦਾ ਹੈ ਤਾਂ ਕਿਰਪਾ ਕਰਕੇ ਦਿੱਤੇ ਗਏ ਨੰਬਰ ਤੇ ਫੋਨ ਕਰੋ।
- Somali** Haddii Ingiriisku uusan ahayn afkaaga koowaad aadna u baahan tahay turjumidda xog ku jirta dokumentigan fadlan la xiriir lambarka lagu siiyey.
- Tamil** ஆங்கிலம் உங்கள் தாய்மொழியாக இல்லாதிருந்து இப்பத்திரத்திலிருக்கும் தகவலின் மொழிபெயர்ப்பு உங்களுக்கு தேவைப்பட்டால் தயவுசெய்து தரப்பட்ட தொலைபேசி எண்ணில் தொடர்பு கொள்ளவும்.
- Urdu** اگر انگریزی آپ کی مادری زبان نہیں ہے اور آپ کو اس دستاویز میں دی گئی معلومات کا اردو ترجمہ درکار ہے، تو براہ کرم دئیے گئے نمبر پر رابطہ کریں۔

020 8424 1535